

VC-50

Precision Diamond Saw

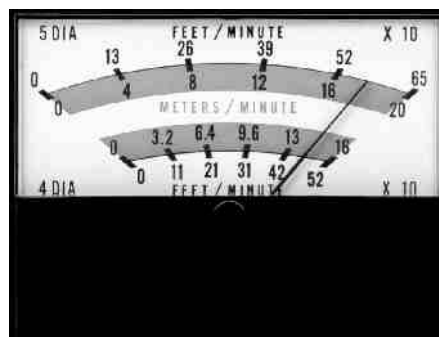


LECO® VC-50 Vari/Cut™ Saw for Faster, Low Deformation Cutting

- 0 to 500 RPM variable speed selection
- Precision micrometer in inches or millimeters for accurate positioning of samples
- Complete with a 5-inch (127 mm) x 0.015-inch (0.38 mm) thick blade
- Sliding weight assembly provides convenient load applications
- Automatic shut-off allows unattended operation
- Vise for samples up to 1.50-inch (38 mm) included

The LECO VC-50 Vari/Cut is ideal for precision sectioning of ceramics, minerals, metals, and electronic components up to 1.5 inches (38 mm) in cross section with a minimum of material loss or deformation. Variable speed selection to 500 RPM is continuously monitored and displayed in surface feet per minute by a tachometer, and the patented LECO electronics maintain constant speed under varying load conditions. The VC-50 will accept 5-inch (127 mm), 4-inch* (102 mm) and 3-inch* (76 mm) diameter blades.

*Requires 802-344, 1.8-inch (46 mm) diameter flanges for maximum depth of cut.



Tachometer display in surface feet/meters per minute



Specifications

| | |
|--|--|
| Electrical Power Requirements. | 115/220 V~ ($\pm 10\%$), 50/60 Hz, single phase, 200 watts |
| Wheel Speed | |
| Standard 5-inch | 50 to 650 SFM |
| Optional 4-inch | 50 to 525 SFM |
| Spindle Speed | 0 to 500 RPM |
| Drive Motor | 1/15 HP |
| Height | 11.5-inch (292 mm) |
| Width. | 13.5-inch (343 mm) |
| Depth | 21.5-inch (546 mm) |
| Weight. | 52 lb. (24 kg) |

Part Numbers

| | |
|-------------|--|
| 800-900 | VC-50 (115 V) Package with imperial measurements |
| 801-900 | VC-50 (115 V) Package with metric measurements |
| 801-900-200 | VC-50 (230V) Package with metric measurements |
| 800-900-200 | VC-50 (230V) Package with english measurements |
| 801-563 | Thin Section Slide Holder* |
| 801-567 | Irregular Shape Specimen Holder* |
| 802-344 | Flanges for 4-inch (102 mm) Blades** |
| 801-136 | 5-inch Diamond Blade with 0.5-inch Arbor Hole (0.014-inch thick) |
| 802-439 | 5-inch Diamond Blade with 0.5-inch Arbor Hole (0.025-inch thick) |
| 801-137 | 4-inch Diamond Blade with 0.5-inch Arbor Hole (0.012-inch thick) |
| 811-146 | 4-inch Al_2O_3 Blade with 0.5-inch Arbor Hole (0.010-inch thick) |
| 811-022 | Cutting Oil (1 pint - 473 ml) |
| 811-023 | Cutting Oil (1 quart - 946 ml) |
| 811-024 | Cutting Oil (1 gallon - 3.78 liters) |

* One included in VC-50 package.

** Two required when using optional 4-inch blades.



ISO-9001
No. FM 24045

Form No. 200-952

LECO Corporation

3000 Lakeview Avenue • St. Joseph, MI 49085-2396
Phone: 800-292-6141 • Fax: 616-982-8977
info@leco.com • www.leco.com



LECO is a registered trademark
of LECO Corporation.

© 2002 LECO Corporation

OSP2.52-REV3