

## Table Top Marumerizer (Spheronizer)

## QJ-230T

### Feature

Table Top Marumerizer is designed to convert wet cylindrical granules into smooth and uniform spheres.

Each component can be easily disassembled for cleaning.

GMP design.

### Specifications

Working Volume: 1Liter/Batch

Material: Product contact part in 316 Stainless Steel

Others in 304 Stainless Steel

Rotation Speed: 600-1800rpm

(Inverter speed control)

Motor: 0.75kW 4Pole

Control Panel: Separate Touch panel type

Power Source: 200/220V AC, 50/60Hz



**QJ-230T without cooling jacket**

### Operation

The QJ-230T can be easily assembled with the desired friction plate for spheronization. Extruded wet granules are fed into the spinning friction plate and thrown against the inside of the Marumerizer, forming a “twisting rope”.

By the collisions of the particles to the wall and friction plate, the granules are forming spheres.

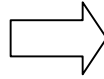
The final shape of particle is time and formulation dependent.

Once the desired particle shape is achieved, the batch is discharged through a manual plug valve and discharge chute, collected, and dried.

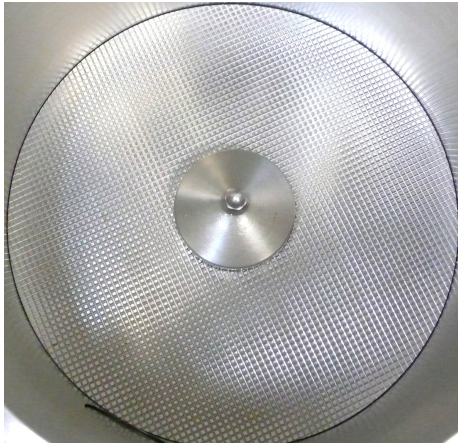
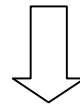
### Process of Spheronization



Extruded Wet Granules



Spheronizing



Friction plate (Marume plate)



Uniformly Spheronized Granules

### Application

Controlled release pellets for encapsulation

Delayed release enteric coated granule

