

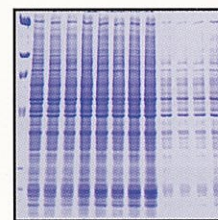
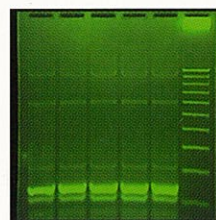
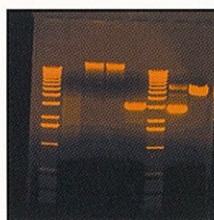
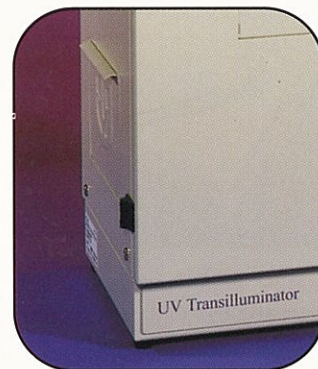
BioDoc-It™ Imaging System



The easy-to-use BioDoc-It System offers an all in one, dedicated gel documentation system for fluorescent and colorimetric imaging. A computer is not required to operate the BioDoc-It, however, network connectivity is now possible for transfer of images.

BioDoc-It System includes a monochrome CCD camera with the compact darkroom and UV Transilluminator.

Three door model (photo to the right) has access doors located on each side of the darkroom for cutting gels.



- CompactFlash memory card (64 MB) and card reader for loading images to a computer
- Save images in 8 or 12-bit TIFF or 8-bit JPG file formats
- Connect the BioDoc-It to a network for additional image transfer capability
- Monochrome CCD camera with enhanced signal to noise ratio for better image quality
- Zoom lens with close-up diopter
- Emission filter tray allows easy access to the Ethidium Bromide filter for exchange of filters
- 6.4" LCD screen pivots for optimum viewing angle
- Touch-pad buttons for camera integration, image exposure and file saving
- Built-in bright overhead LED white light for focusing as well as being an illumination source for white light or colorimetric samples
- Wide access door allows easy placement of samples or accessories; safety switch turns the UV off when the door is open
- A variety of UV Transilluminator models are available; select from single UV, 3UV™, 2UV™ and the new FirstLight™ UV Illuminator
- Optional Doc-It LS Software loads onto your computer for analysis of images

Save images to CompactFlash memory card!

BioDoc-It System Specifications

CCD Video Camera

Type:	Composite monochrome
Sensor:	On-chip interline transfer CCD
Resolution:	752 x 582 PAL (CCIR)
Lens:	8-48mm Zoom
Filters:	Ethidium Bromide
Dynamic Range:	8-bit
Integration:	0.04 to 10 sec @ 30 frames/sec.
Power:	12V AC/DC 115V/60Hz or 230V/50Hz

Integrated Processor and LCD Monitor

17 pre-set integration times from 0.04 to 10 sec
Auto-save images in TIFF or JPEG formats
6.4" LCD monitor
Compact Flash Memory Card, 64MB memory
Network connectivity

Space Saving Benchtop Darkroom

Overhead LED white light
Gel viewer window
Full access door with UV safety switch
Optional side access ports

Transilluminator

System includes a UV transilluminator; select from single or multiple UV wavelength models

Compact Flash Memory Card Reader with USB cable

Optional Filter

Camera Filter, SYBR Green/EGFP	38-0219-01
--------------------------------	------------

Dimensions: 14W x 12.7D x 27H in. (256 x 323 x 686mm)